









Wagoner County Comprehensive Plan Proposed OTA Interchange and Approaches

Legend

-  Highway
 -  Arterial Road
 -  Waterbodies
 -  Incorporated Place
 -  Wagoner County
- Proposed OTA Interchange and Approaches**
-  New Street Alignment
 -  Existing Arterial Street
 -  Ramp

Zoom in of Proposed Interchange

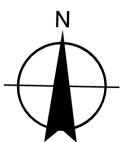
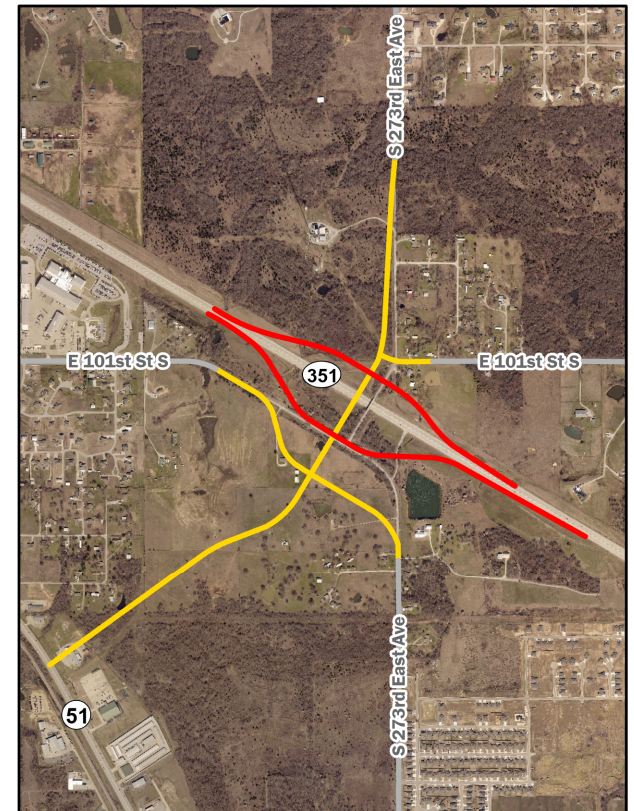


Figure 11.6

